

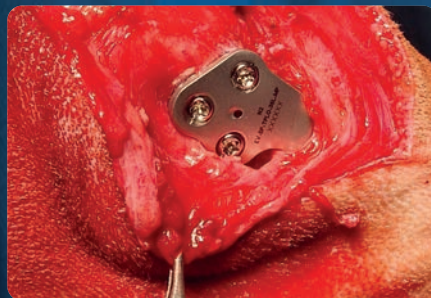
UK manufactured

N2 (UK) Ltd



Veterinary Supplies

# Spinnaker TPLO




10 Years of Evolox®

Now available in 2.0, 2.4, 2.7, 3.5 short, 3.5 and 3.5mm broad

 [www.n2-uk.com](http://www.n2-uk.com)

 +44 (0)23 9323 3265

 @n2ukcom

 [www.facebook.com/n2ukltd](http://www.facebook.com/n2ukltd)

 [sales@n2-uk.com](mailto:sales@n2-uk.com)

 [office@n2-uk.com](mailto:office@n2-uk.com) for orders





## TPLO Spinnaker

**2 years in the making, we are pleased to launch the Spinnaker Range.**

The name is synonymous with Portsmouth the home of N2 with its iconic Spinnaker Tower.

A spinnaker is a triangular curved sail on the bow of a ship leading from the front to improve speed and efficiency, so the name fits nicely with curved shape of the plate and iconic triangular holes of the Evolox® range.

Working with leading surgeons in the UK market to develop, it takes the best parts of our current popular range and improves it further.

The head is much smaller and kinked over to fit the osteotomy better after the cut, and the angle has been trialled to fit perfectly to most tibias.

The shaft has a very shallow curve in it to fit nicely on the bone without the risk of sitting off the bottom of the bone with larger curves, allowing you to rotate the plate into position.

Material wise we continue to use the same human grade stainless steel (ISO 5823-1) as in our other plates to ensure unparalleled plate strength. The plate will be available with both monoaxial and polyaxial proximal holes to ensure all users will have an option that suits their preferences.

The polyaxial nature of the holes only adds to the construct strength, even under heavy loads.



Order Code	Description
EV-SP-TPLO-24L-PP*	Spinnaker TPLO Evolox® Plate 2.4mm - Left (Polyaxial Proximal Hole)
EV-SP-TPLO-24R-PP*	Spinnaker TPLO Evolox® Plate 2.4mm - Right (Polyaxial Proximal Hole)
EV-SP-TPLO-27L-PP*	Spinnaker TPLO Evolox® Plate 2.7mm - Left (Polyaxial Proximal Hole)
EV-SP-TPLO-27R-PP*	Spinnaker TPLO Evolox® Plate 2.7mm - Right (Polyaxial Proximal Hole)
EV-SP-TPLO-35LS-PP*	Spinnaker TPLO Evolox® Plate 3.5mm Short - Left (Polyaxial Proximal Hole)
EV-SP-TPLO-35RS-PP*	Spinnaker TPLO Evolox® Plate 3.5mm Short - Right (Polyaxial Proximal Hole)
EV-SP-TPLO-35L-PP*	Spinnaker TPLO Evolox® Plate 3.5mm - Left (Polyaxial Proximal Hole)
EV-SP-TPLO-35R-PP*	Spinnaker TPLO Evolox® Plate 3.5mm - Right (Polyaxial Proximal Hole)
EV-SP-TPLO-35LB-PP*	Spinnaker TPLO Evolox® Plate 3.5mm Broad - Left (Polyaxial Proximal Hole)
EV-SP-TPLO-35RB-PP*	Spinnaker TPLO Evolox® Plate 3.5mm Broad - Right (Polyaxial Proximal Hole)

Order Code	Description
LPL-SP-TPLO-20L-MP	Spinnaker TPLO Locking Plate 2.0mm - Left (Monoaxial Proximal Hole)
LPL-SP-TPLO-20R-MP	Spinnaker TPLO Locking Plate 2.0mm - Right (Monoaxial Proximal Hole)
EV-SP-TPLO-24L-MP	Spinnaker TPLO Evolox® Plate 2.4mm - Left (Monoaxial Proximal Hole)
EV-SP-TPLO-24R-MP	Spinnaker TPLO Evolox® Plate 2.4mm - Right (Monoaxial Proximal Hole)
EV-SP-TPLO-27L-MP	Spinnaker TPLO Evolox® Plate 2.7mm - Left (Monoaxial Proximal Hole)
EV-SP-TPLO-27R-MP	Spinnaker TPLO Evolox® Plate 2.7mm - Right (Monoaxial Proximal Hole)
EV-SP-TPLO-35LS-MP*	Spinnaker TPLO Evolox® Plate 3.5mm Short - Left (Monoaxial Proximal Hole)
EV-SP-TPLO-35RS-MP*	Spinnaker TPLO Evolox® Plate 3.5mm Short - Right (Monoaxial Proximal Hole)
EV-SP-TPLO-35L-MP	Spinnaker TPLO Evolox® Plate 3.5mm - Left (Monoaxial Proximal Hole)
EV-SP-TPLO-35R-MP	Spinnaker TPLO Evolox® Plate 3.5mm - Right (Monoaxial Proximal Hole)
EV-SP-TPLO-35LB-MP*	Spinnaker TPLO Evolox® Plate 3.5mm Broad - Left (Monoaxial Proximal Hole)
EV-SP-TPLO-35RB-MP*	Spinnaker TPLO Evolox® Plate 3.5mm Broad - Right (Monoaxial Proximal Hole)

\*Coming 3rd quarter 2024

## Stabilising Pin with Olive

Order Code	Shank / Thread	Length
PIN-OL3-160-125-TR	1.6	125

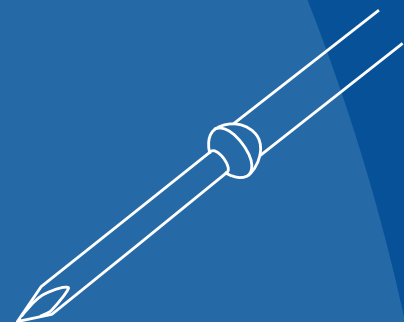




Image courtesy of Kalin Spasov at Rata Veterinary Surgery

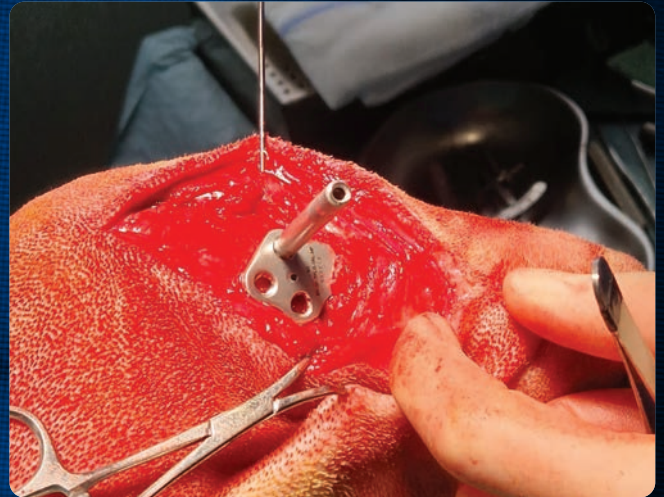


Image courtesy of Ben Garland from Debenham Veterinary Referrals



Image courtesy of Colin Whiting at Beacon Vet Care



Image courtesy of James Pattison at Rata Veterinary Surgery



Image courtesy of Tommy Hargittai of SAS - Small Animal Surgery Limited

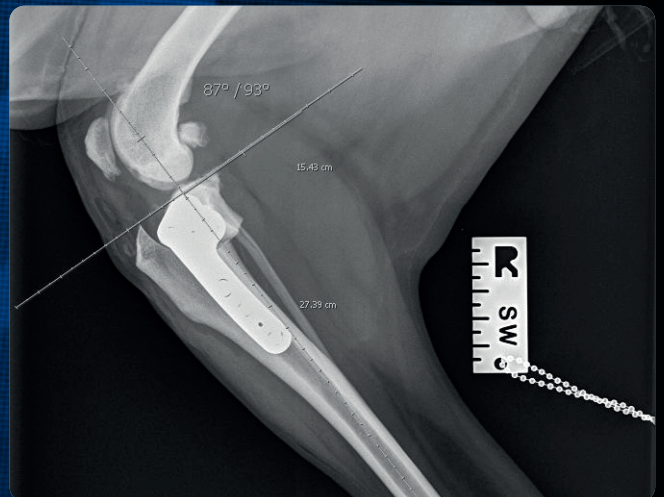


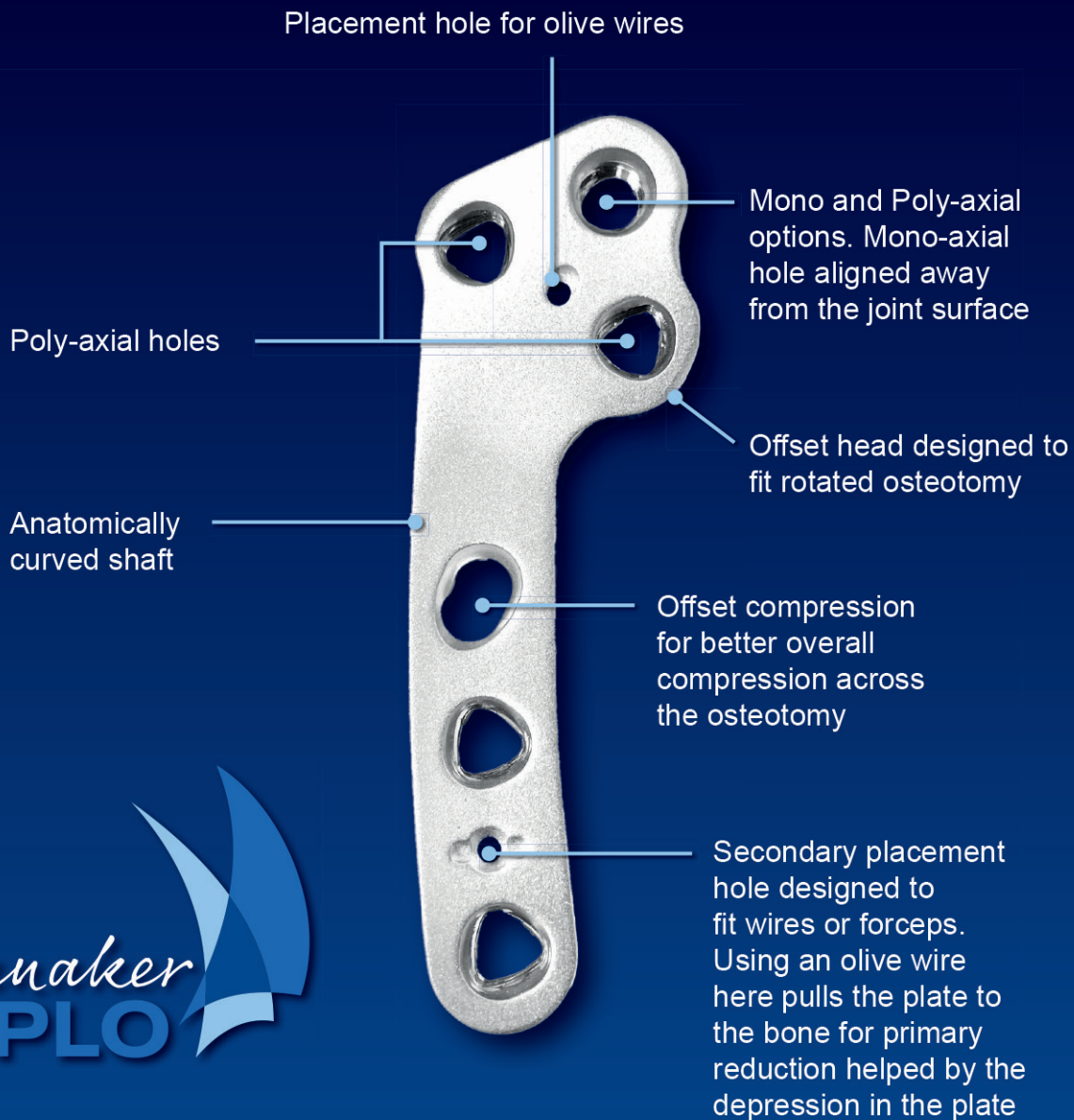
Image courtesy of Steve Kirby from SK Orthopaedics

N2 (UK) Ltd



Veterinary Supplies

# Spinnaker Plates



Spinnaker  
TPLO

“I love the new plate design, in the 3.5mm size it fitted intuitively and so far has been working well. I am looking forward to getting my hands on some more sizes.”

James Pattison

BVSc CertAVP(GSAS) MRCVS Rata Veterinary Surgery

“We love the new plate, very comfortable to use. Easy to apply and the polyaxial option does help when you have limited bone stock. Compression is also very good”

Kalin Spasov MSc MRCVS Rata veterinary surgery

“The curved design of the Spinnaker TPLO plate along with the anatomical contouring and new plate head configuration excellently matches the proximal tibia post-rotation. The olive wire hole in the plate shaft is a simple yet innovative addition, alongside the familiar polyaxial locking and angle dynamic compression screw holes. Satisfying and simple to use!”

Dr Ben Garland BVetMed (Hons) CertAVP(GSAS) MRCVS

RCVS Advanced Practitioner in Small Animal Surgery Debenham Veterinary Referrals



www.n2-uk.com

+44 (0)23 9323 3265

@n2ukcom

www.facebook.com/n2ukltd

sales@n2-uk.com

office@n2-uk.com for orders



*Innovate not Replicate*

The New Spinnaker TPLO challenge was to improve on our current range, listen and act on Surgical concerns, and used our decades of engineering skills of Implants manufacturing to create the next generation of TPLO Plate.

Our motto *'Innovate not replicate'* has never meant so much.

N2 is a privately owned independent company based in the UK.

The new range is completely redesigned, developed, and manufactured in the UK.

The head section of the plate has multidirectional curves and angled to sweep in the direction of proximal osteotomy.

The anatomical shape of the shaft has a gentle curve ensuring optimal fit and strength. Based upon published surgical data and reviews, an over curved plate can restrict optimal fit and offers no benefits.

The plates all have an Kirschner (K) wire hole near the first locking shaft screw to aid predrilling. The 2.7mm sizes upwards also incorporate a groove/hole for plate clamping and head K wire holes to secure the head to the bone prior to drilling.

The 3.5mm size upwards also have the added feature of a hole with an offset domed groove for an Olive wire or Forceps to sit to sit perpendicular to the shaft of the plate.

The Evolox Poly-axial shaft screws enable angular screw placement to increase pull out resistance and highly resistant to working loose under repeating loads.

The plate contains a single compression slot angled to compliment the head design and the most functional solution. The use of multiple compression slots has no benefits over solid bone stock.

Our screw and compression slots are fractionally offset from the centre line of the plate reducing the risk of failure and dispersing the weight across the screw areas and making the plate a more rigid construct.

The screws (Proximal, Cranial and Caudal) in the head of the plate are newly rotated than traditional offerings to ensure when the screws are fixed they offer optimal stabilisation. We saw that a smaller length screws in thinner bone area could compromise the plate.

All of our Evolox threaded holes can take either a cortical or locking screw.

Our Implants are non-reflective with a satin finish but threads remain polished and therefore do not deform or hide contaminates.

Our plates are formed to the exact geometry and ensure metal grain structure is stronger than a fully machined/cast Implant. With the combination of material tensile strength and manufacturing processes, our plate thicknesses are reduced without compromise.

We have always made our plates to use standard Cortical(Cortex), Cancellous and Locking Screws and do not require extra inventory, brand exclusive screws, and always using Human grade Stainless Steel. Using nonstandard screws leaves the customer to ransom to stock outages and pricing hikes without alternative supply.

N2 also offers variable locking screw adapters to reduce s screws while keeping the head portion constant when bone stock is damaged or reduced.

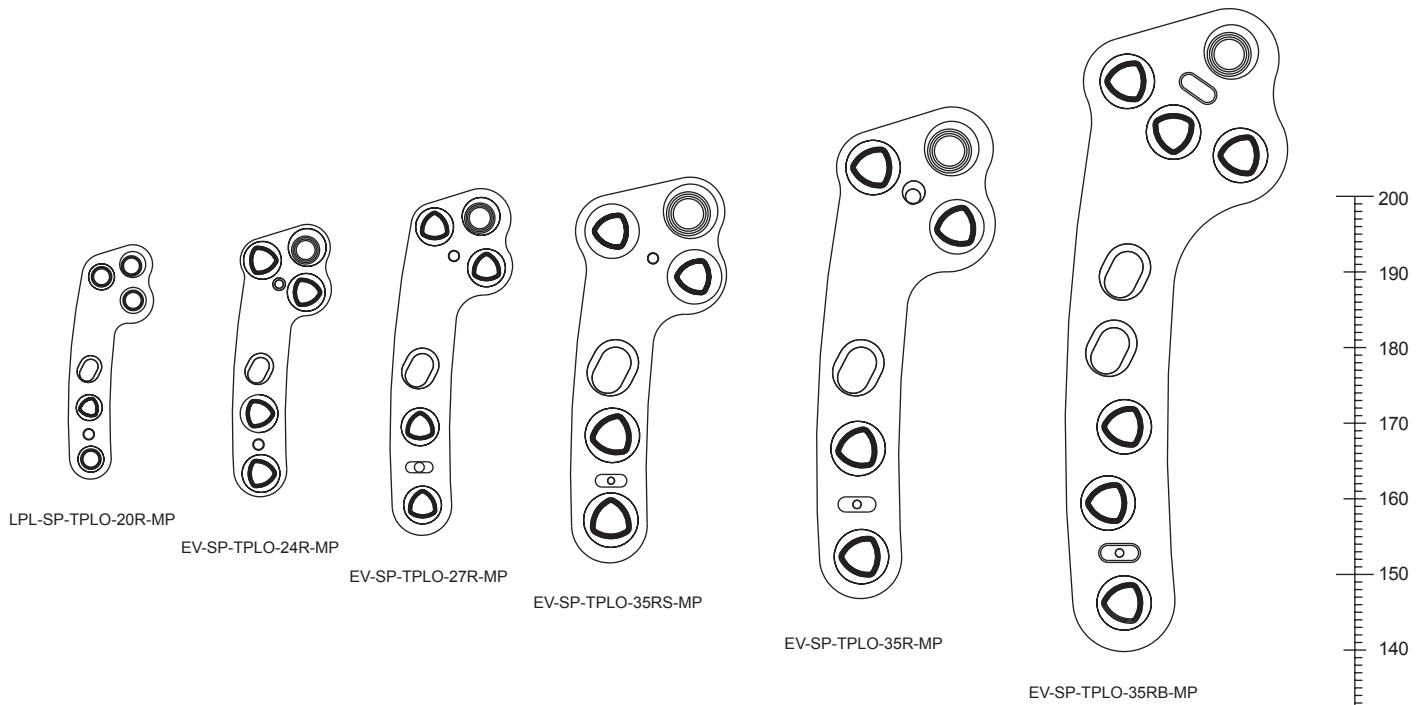
Made with human grade Stainless Steel to ISO 5832-1 specification.316LVM.

The quality standards of ISO 13485 is used on all of our Implants.

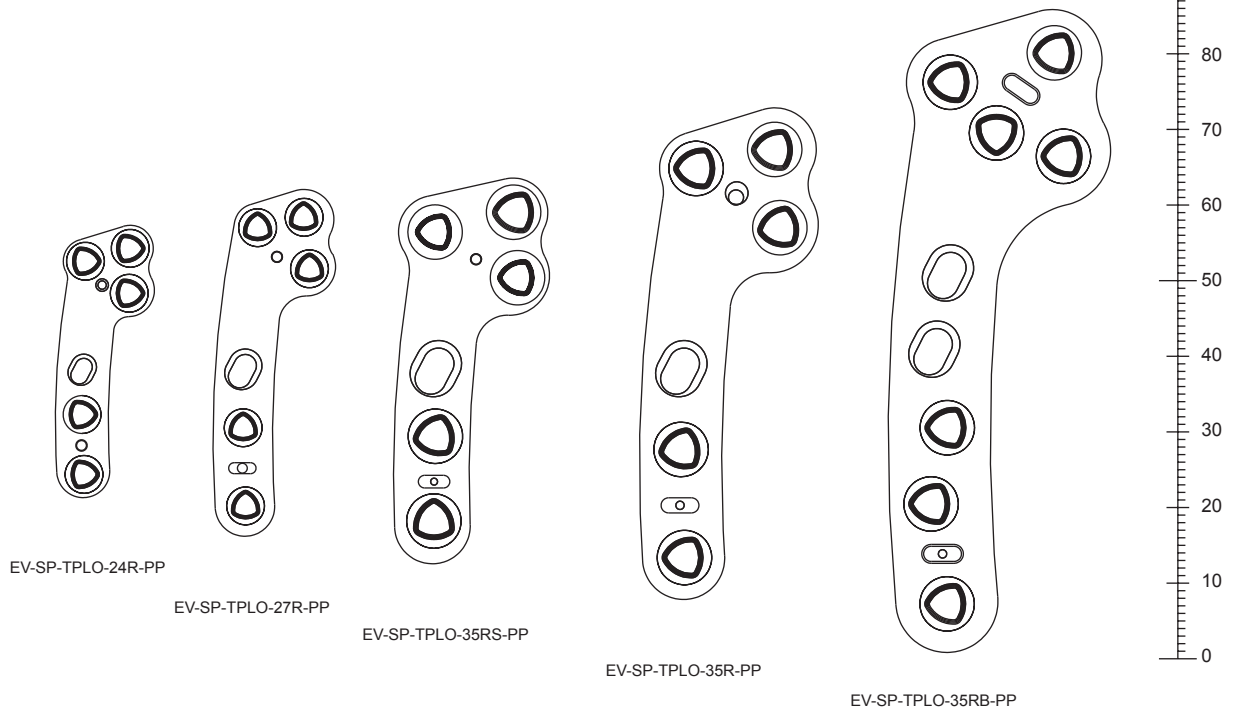
We welcome site visits, audits and even just curious customers.

*Spinnaker TPLO designed by Nick Gardener, Director*

## Spinnaker TPLO Evolox® Plate (Monoaxial Proximal Hole)



## Spinnaker TPLO Evolox® Plate (Polyaxial Proximal Hole)





# Veterinary Supplies

N2 (UK) Ltd  
Veterinary Supplies

**VETERINARY**

Implant Catalogue  
for osteosynthesis

*Spinaker*  
TPO

10 Years of Evolox®

www.n2-uk.com  
+44 (0)23 9323 3265  
@n2ukcom

www.facebook.com/n2ukltd  
sales@n2-uk.com  
office@n2-uk.com for orders

N2 (UK) Ltd  
Veterinary Supplies

**VETERINARY**

Instrument Catalogue

www.n2-uk.com  
+44 (0)23 9323 3265  
@n2ukcom

www.facebook.com/n2ukltd  
sales@n2-uk.com  
office@n2-uk.com for orders

N2 (UK) Ltd  
Veterinary Supplies

**Capital Equipment**

Our reputation for quality and value has led to many requests for portable systems and vital time. We have teamed up with some of our trusted suppliers to expand our range into capital equipment. We have added a cross section of our range to the brochure but there are many other systems we have explored that you may find useful and you may be particularly excited about working with Malvern and Chelton. Our complete commitment to their quality. We have also added a range of autoclaveable drills to our range of hand tools, including the H2O unit which includes a TPO Saw attachment.

www.n2-uk.com  
+44 (0)23 9323 3265  
www.facebook.com/n2ukltd  
sales@n2-uk.com  
office@n2-uk.com for orders

N2 (UK) Ltd  
Veterinary Supplies

**Consumable Catalogue**

As we are the supplier to many practices for their orthopaedic and instrument needs, we thought it would be useful to add a range of consumable items linked in to orthopaedics. We are particularly excited about our collaborations with Bionomed and becoming their exclusive UK supplier of the Adaptor™ range and also with B Braun with their Suture lines.

www.n2-uk.com  
+44 (0)23 9323 3265  
www.facebook.com/n2ukltd  
sales@n2-uk.com  
office@n2-uk.com for orders

N2 (UK) Ltd  
Veterinary Supplies

*Innovate not Replicate*

**Evolox®**  
Osteosynthesis Locking Plate System  
A User's Guide

*Designed, developed and manufactured in the UK*

N2 (UK) Ltd  
Veterinary Supplies

**UNIUM™**  
Small Bone and Trauma Platform  
**CONNECT WITH POWER**  
Product Brochure

AO

DePuy Synthes

## Please contact us for a copy of our additional catalogues



www.n2-uk.com  
+44 (0)23 9323 3265  
@n2ukcom

www.facebook.com/n2ukltd  
sales@n2-uk.com  
office@n2-uk.com for orders