

Capital Equipment

N2 (UK) Ltd



Veterinary Supplies



Our reputation for quality and value has led to many requests for products outside our usual lines.

We have teamed up with some of our trusted suppliers to expand our range into capital equipment.

We have added a cross section of this range to the brochure but there are many other options we have access to if you can't quite see what you like. We are particularly excited about working with Midmark and Opticlar, two companies renowned for their quality.

We have also added a range of autoclavable drills to suit every budget, including the A100 unit which includes a TPLO Saw attachment



www.n2-uk.com



+44 (0)23 9323 3265



www.facebook.com/n2ukltd



sales@n2-uk.com



office@n2-uk.com for orders

Tabletop Sterilizers



Midmark Tabletop Sterilizers

Reliable:

Midmark sterilizers last longer due to top quality components made in Europe.

Perfect for your needs:

18, 23 and 60 litres chambers are made of thick one-piece moulded AISI 304 steel.

Trouble Free:

Intelligent self-checking system alerts about maintenance needs.

Efficient:

Pre-set validated sterilizations programs.

Safe:

Multiple sensors check working parameters adapting cycle times to internal and external conditions.

Accurate:

The integrated water quality sensor constantly monitors the water quality. Only good quality water ensures a perfect sterilization and long life for your instruments and autoclave.

Simple:

Easy to use by everyone, easy to service

Order Code	Description	RRP
AU-CL-18-B	Vetassure Autoclave 18L B Class Autoclave	£3,650.00
AU-CL-23-B	Vetassure Autoclave 23L B Class Autoclave	£4,150.00
AU-CL-60-B	Vetassure Autoclave 60L B Class Autoclave	£10,999.00
AU-CL-18-S	Vetassure Autoclave 18L S Class Autoclave	£3,180.00
AU-CL-23-S	Vetassure Autoclave 23L S Class Autoclave	£3,660.00

Price includes delivery, installation by engineer. Staff training at time of installation - 2 years/2000 cycles.

Warranty labour and parts and pre site survey.



Door Locking:

Motor operated door locking, guarantees total safety, greater ease of handling and reliable self regulation of the door.



Water Quality Sensor:

Our sterilizers are additionally protected by the inclusion of a water quality sensor, as standard. The quality of the water is therefore constantly monitored. The display informs the user whether water used for sterilization is good.



Usb Port:

Automatic digital cycle recording on USB stick can be downloaded on your PC using our proprietary software (optional).



User Friendly Interface:

Just four buttons keypad for simple navigation to all sterilization options. The LCD display shows current information about your sterilization cycles and alerts on errors or service needs.



Built-In Thermal Printer:

An automatic print-out records the entire procedure, thereby providing a permanent record of every sterilization cycle. The paper printout can then be kept and attached to your files for a complete and accurate record.



Start Delay - Option Extra Drying - Option

Cycle options available in the user menu.

- Capacity 60 liters
- Built-in osmotic system
- Double vacuum pump
- Double motor-operated locking system
- Integrated usb storage device
- On board printer
- Additional drying option
- « Start delay » option
- B/S/N-class cycles included
- Single phase B60 option
- Three phase B60 steam injection option

MIDMARK VE TA SSURE 18 L

RECOMMENDED CYCLES
● Cycle designed to sterilize wrapped material
● Cycle suitable for sterilizing UNWRAPPED MATERIAL only

TEMP AND NAME OF CYCLE	STERILIZABLE LOADS ¹	TECHNICAL SPECS OF THE CYCLES ²				
		STRD	RY	TO TK	G	
134° B Helix - B&D Test	Steam Penetration Test	●	03:30	04:00	~25m	0
- Vacuum Test	Leak Detection Test	●	-	-	~15m	0
121° B Hollow Wrapped	Solid load, small porous objects, simple hollow load and narrow lumen, multiple casing	●	18:00	15:00	~50m	2.5
134° B Hollow Wrapped		●	10:00	15:00	~44m	2.5
121° B Porous		●	18:00	20:00	~57m	1.0
134° B Porous	Full porous load	●	15:00	20:00	~50m	1.0
134° B Prion		●	20:00	15:00	~54m	2.5
134° S Rapid	Solid load, small porous objects, simple hollow load	●	05:00	10:00	~42m	4.0

B-CLASS

S-CLASS

TEMP AND NAME OF CYCLE	STERILIZABLE LOADS ¹	TECHNICAL SPECS OF THE CYCLES ²				
		STRD	RY	TO TK	G	
134° S Bowie & Dick Test	Steam Penetration Test	●	03:30	04:00	~28m	0
- Vacuum Test	Leak Detection Test	●	-	-	~15m	0
121° S Hollow Wrapped	Solid load, small porous objects, simple hollow load	●	18:00	15:00	~51m	1.5
134° S Hollow Wrapped		●	10:00	15:00	~45m	1.5
121° S Porous		●	18:00	20:00	~61m	0.5
134° S Porous	Small sized porous load	●	15:00	20:00	~60m	0.5
134° S Prion	Load related to the Creutzfeldt-Jakob disease	●	20:00	15:00	~55m	1.5
134° S Rapid	Solid load, small porous objects, simple hollow load	●	05:00	10:00	~41m	2.5

¹ To select the sterilization cycle, always refer to the indications of the manufacturer of the instrument /load to be sterilized.

² Please note that, although the total times indicated in the table have been obtained by trying to simulate the "worst" autoclave conditions, changes to the times indicated are possible: power supply cycle start temperature, weight of the inserted loads and other factors have an impact on the total duration of the cycle.

MIDMARK VE TA SSURE 23 L

RECOMMENDED CYCLES
● Cycle designed to sterilize wrapped material
● Cycle suitable for sterilizing UNWRAPPED MATERIAL only

TEMP AND NAME OF CYCLE	STERILIZABLE LOADS ¹	TECHNICAL SPECS OF THE CYCLES ²				
		STRD	RY	TO TK	KG	
134° B Helix - B&D Test	Steam Penetration Test	●	03:30	04:00	~35m	0
- Vacuum Test	Leak Detection Test	●	-	-	~15m	0
121° B Hollow Wrapped	Solid load, small porous objects, simple hollow load and narrow lumen, multiple casing	●	18:00	15:00	~60m	3.5
134° B Hollow Wrapped		●	10:00	15:00	~54m	3.5
121° B Porous		●	18:00	20:00	~67m	1.5
134° B Porous	Full porous load	●	15:00	20:00	~60m	1.5
134° B Prion		●	20:00	15:00	~64m	3.5
134° S Rapid	Solid load, small porous objects, simple hollow load	●	05:00	10:00	~52m	4.5

B-CLASS

S-CLASS

TEMP AND NAME OF CYCLE	STERILIZABLE LOADS ¹	TECHNICAL SPECS OF THE CYCLES ²				
		STRD	RY	TO TK	KG	
134° S Bowie & Dick Test	Steam Penetration Test	●	03:30	04:00	~28m	0
- Vacuum Test	Leak Detection Test	●	-	-	~15m	0
121° S Hollow Wrapped	Solid load, small porous objects, simple hollow load	●	18:00	15:00	~61m	2.5
134° S Hollow Wrapped		●	10:00	15:00	~55m	2.5
121° S Porous		●	18:00	20:00	~71m	1.0
134° S Porous	Small sized porous load	●	15:00	20:00	~70m	1.0
134° S Prion	Load related to the Creutzfeldt-Jakob disease	●	20:00	15:00	~65m	2.5
134° S Rapid	Solid load, small porous objects, simple hollow load	●	05:00	10:00	~51m	2.5

¹ To select the sterilization cycle, always refer to the indications of the manufacturer of the instrument /load to be sterilized.

² Please note that, although the total times indicated in the table have been obtained by trying to simulate the "worst" autoclave conditions, changes to the times indicated are possible: power supply cycle start temperature, weight of the inserted loads and other factors have an impact on the total duration of the cycle.

MIDMARK 60 L

TEMP AND NAME OF CYCLE	STERILIZABLE LOADS ¹	TECHNICAL SPECS OF THE CYCLES ²				
		STRD	RY	TO TK	B60S	KG
134° B Helix - B&D Test	Steam Penetration Test	●	03:30	04:00	~75m	45m
- Vacuum Test	Leak Detection Test	●	-	-	~15m	15m
121° B Hollow Wrapped	Solid load, small porous objects, simple hollow load and narrow lumen, multiple casing	●	20:00	15:00	~140m	~90m
134° B Hollow Wrapped		●	05:00	15:00	~135m	~85m
121° S Solids Wrapped		●	20:00	15:00	~125m	~75m
134° S Solids Wrapped	Solid load, small porous objects, simple hollow load	●	05:00	15:00	~120m	~60m
134° B Prion	Load related to the Creutzfeldt-Jakob disease	●	20:00	15:00	~150m	~90m
134° B Porous	Full porous load	●	05:00	25:00	~160m	~110m
134° N Solids Open	Solid load	●	05:00	15:00	~105m	~90m



Multiparameter Monitor

The Midmark Multiparameter Monitor is designed with the tools to help you provide safer, more efficient care.

Designed for safer, more efficient procedures

With decades of clinical experience responding to common anesthetic issues, we have designed enhanced features to help your team avoid pitfalls and prevent anesthetic complications. In addition, the Midmark Multiparameter Monitor features Cardell® blood pressure technology, veterinary specific algorithms, and innovative, staff-friendly capabilities.

Pre-procedure checklist + soda lime reminder

As a veterinary professional, your day can be extremely demanding. With the new pre-procedure checklist and CO₂ soda lime absorbent reminder, you can feel at ease knowing everyone in your practice is taking the necessary steps for safe and efficient procedures.

Enhanced BP features

the Cardell® BP technology you have grown to trust adapts to your patient and employs advanced motion suppression for more efficient, reliable and timely readings. An additional screening mode allows for more accurate diagnostic readings on awake patients.

ECG + CO₂ library

the new waveform library shows the most common patterns you'll find in anesthetic cases, which can help you confidently and quickly make an informed decision to move a procedure forward. When you see a waveform that doesn't look normal, you can quickly - with one touch-scroll to match patterns of common anesthetic occurrences from tachycardias to VPCs and airway obstructions to hypercapnia. Being able to quickly compare waveforms eliminates some of the guesswork in identifying possible problems - major or minor - and often results in better patient outcomes.



Midmark Multiparameter Monitor Specifications

Non-Invasive Blood Pressure (NIBP)	Cardell® Technology
Pulse Oximetry (SpO ₂)	Nellcor® Oximax®
CO ₂	Respironics C-STAT5 Mainstream Respironics LoFlo Sidestream
ECG	3-Lead Standard 5-Lead Optional
HR/PR	ECG HR/SpO ₂ and NIBP PR
Temperature	2-Channel
Respiration Method	Indirect: Impedance Direct: Capnography (optional)
Invasive Blood Pressure	2-Channel (optional)
Anesthetic Gas	Masimo® Multigas Mainstream or Sidestream (optional) CO ₂ , N ₂ O, ISO, SEV, ENF, DES, HAL
Display	12.1" LCD Resistive Touch Screen
Waveform Display	6-Channel with IBP and Multigas Options 3-4 Channel Standard Display
ECG Vector Wave Form Display	7-Channel with 5-Lead Option 1-Channel with 3-Lead Option
ECG Gain	Auto, x0.25, x0.5, x1, x2, x4
HR/PR Range	ECG HR = 15–350 bpm SpO ₂ PR = 20–300 bpm
NIBP Modes	Manual, Auto, Continuous, Screen
Parameter Alarms	User-Defined High/Low with 4 Defaults (Cat, Dog, Horse, Other)
Download to PC	USB Drive
Weight	9.2 LB (Monitor with Battery)
Battery Life	Up to 10 Hours
Limited Warranty	2 Years, limited

Order Code	Description	RRP
MON-MTP-PR	Midmark Multiparameter Monitor with Printer	£ POA
MON-MTP-NP	Midmark Multiparameter Monitor without Printer	£ POA
MON-MTP-PR-BP	Midmark Multiparameter Monitor with Printer and Invasive BP	£ POA



Recessed units not shown

QuickClean[™] Ultrasonic Cleaner

POWERFUL CLEANING – CONSISTENT RESULTS

Providing powerful, effective cleaning and consistent results, the QuickClean Ultrasonic Cleaner is a piece of equipment your dental office can't be without. The QuickClean's cutting-edge technology can help you create a safer, more efficient work environment by decreasing worker exposure to contaminants and potential sharps injuries while reducing the time and effort needed for cleaning.

- 150% more effective than Soniclean
- Customized cycle times from 1-99 minutes
- Full-size safety basket included
- 3-year limited warranty

LEAP



Powerful Technology

The QuickClean unit cleans thoroughly and consistently throughout the entire bath using Frequency-Leap technology. This advancement in cleaning efficiency helps ensure all of your instruments are fully cleaned the first time, every time, no matter where they are placed in the basket.

Simple to Operate

The QuickClean is easy to use right out of the box, so you can get your staff up and running with minimal training time. Features like a digital LCD control panel that displays prompts, options for preset or customized settings, intelligent software that remembers the last cycle settings, and a fluid sensor that ensures the bath always has sufficient water levels help simplify your processes and increase productivity.

Range of sizes and design options

The QuickClean comes in three table top sizes (1.2, 3.3 and 6.6 gal) and two recessed options (3.3 and 6.6 gal), so you can choose the option that best fits your configuration and workflow. And the stainless steel finish and attractive design coordinate well with any décor.

Order Code	Description	RRP
UC-QC1-4.5	Quickclean 4.5L Ultra Sonic Cleaner, Includes Delivery	£1,350.00
UC-QC3-12.5	Quickclean 12.5L Ultra Sonic Cleaner, Includes Delivery	£1,700.00
UC-QC6-25	Quickclean 25L Ultra Sonic Cleaner, Includes Delivery	£2,200.00

Capacity

4.5 / 12.5 / 25 L

Dimensions (H x W x D)

265 x 345 x 260 mm
265 x 375 x 420 mm
365 x 550 x 420 mm

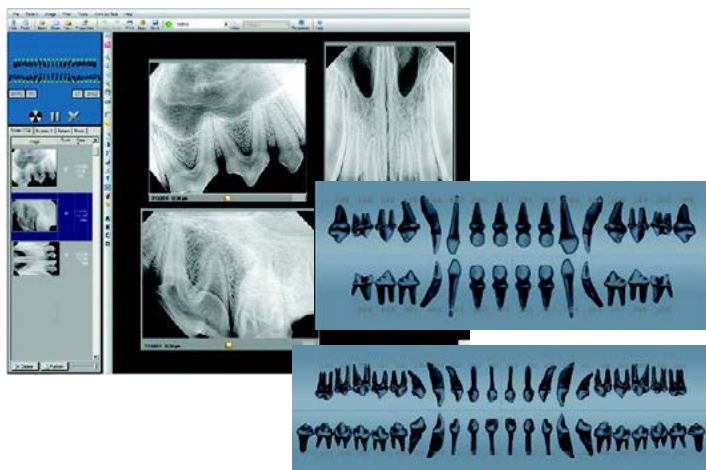
Tank size (H x W x D)

150 x 300 x 150 mm
150 x 330 x 300 mm
200 x 505 x 300 mm

Weight

5.76 Kg (empty)
8.42 Kg
13.44 Kg

Midmark DC generator



The Midmark DC uses simple icons and a large, easy-to-read display for ease of use. You can select the mA, kV and time settings of your choice or choose the convenient pre-programmed technique settings. The positioning arm is constructed with high-tolerance, frictionless joints and a heavy duty dual braking system designed for precise and stable placement. The unique tube head handle is designed to let you effortlessly put the X-ray source where you want it, with just one hand.

Radiography Software

Acquire, enhance and store images with ease. Midmark DR Systems use our own easy-to-use imaging software with a look and formatting that are familiar and easy to learn. Our software is DICOM compliant, works with leading practice management systems and PACS servers, and features canine and feline tooth templates that are organized using the Triadan System.

- High quality image
- Powerful, no-hassle software
- Intuitive and logical interface
- Simplified acquisition
- DICOM-formatted images
- Data backup and restore functions
- 22 practical and useful tools
- Create your own custom templates
- Bridges with most major practice management programs
- Store any digital image
- Integrates with AVImark® practice management software
- Intuitive, with easy-to-use, veterinary-specific software and control panel
- DC technology allows you to adjust kV (60, 65 and 70) and mA (4, 5, 6 and 7)
- Flexible system with settings you can customize to suit your practice
- Sensor holder for arm available with Midmark sensor
- 56", 66", 76" or 82" arm lengths and versatile mobile system
- No-hassle installation—simply connect the USB cable to your PC, use the quick calibration flash drive to prepare your sensor, and the system is ready
- Quality construction—made in the USA
- Before, during and after sale support

The Midmark DC 0.4 mm focal spot is designed to produce visibly higher resolution images whether you're using film or digital sensors. Details are sharper and more defined. Small but important differences are easier to spot. Pathologies are easier to identify.

Order Code	Description	RRP
DEN-XRAY-COM	Midmark Dental Xray and Digital Sensor System	£ POA
DEN-XRAY-DC	Midmark DC Digital Dental Radiography System	£ POA



The Midmark 1000 Mobile Dental Delivery System

The Midmark 1000 Mobile Dental Delivery System uses oil-free technology that eliminates the oil that can contaminate your handpieces. You get a clean, dry aseptic work environment that's good for you, your team, and your patients. Best of all, you don't have to do any more oil changes!

Designed for Veterinary Clinics

Staff turnover is a huge issue affecting many veterinary clinics. It's important to get new team members up to speed fast, and intuitive tools make the job easier. Users can switch from handpiece to handpiece without touching a button. The Midmark 1000 automatically adjusts as each handpiece is lifted from its cradle. The Midmark 1000 also features one of the quietest compressors on the market, keeping your work environment more peaceful during procedures.

Ergonomically Correct

Strain on hands and wrists is a major health concern for veterinarians and techs performing dentistry. When your wrist is already aching after one procedure, you know you're in for a long day. That's why using the correct handpieces is so important—they can increase your day-to-day stamina and career longevity. The swivel handpiece is designed to work with your hand and wrist movements and sit comfortably in your hand. This design, coupled with the mobility of the Midmark 1000 system, maximizes your work space and movements to give you a wider range of motion while you work on patients.

Constructed for Durability

Hair and debris can interfere with some units when you're doing procedure after procedure. You need a unit that can withstand the rigors of a clinical setting. The Midmark 1000 is made from sturdy ABS plastic, protects its internal mechanics with a completely enclosed system, and protects its wheels from debris with medical-grade casters.

Midmark 1000 Specifications

Overall Depth	18.5" (46.99 cm)
Overall Width	23" (58.42 cm)
Overall Height	36.5" (92.71 cm)
Casters	3" (7.62 cm) medical grade
Compressor	Oil-free 1/3 hp motor Working pressure: 70-100 psi Flow rate: 2.5 CFM at 40 psi Operational sound level: =50 decibels Air reservoir: 1 gallon Manual air tank purge
Water Module	Two 1-liter reservoirs (toggled) Pressurized system: 30-40 psi Aseptic, non-retracting HPC coolant Manual handpiece flush system External quick connects for water and air
Electrical	Voltage: 220 VAC amp for UK model Frequency: 50 Hz Powercord: 10' hospital grade

Midmark 1000 Dental Delivery Systems

8000-006	Midmark 1000 with integrated LED scaler and fibre optics
8000-006S	Midmark 1000 with integrated LED scaler and fibre optic swivel high-speed handpiece

Order Code	Description	RRP
DEN-MID-UNIT	Midmark 1000 Dental Cart	£ POA

Opticlar Medical Diagnostic Instruments



OPT-DIA-SET-STD-2H-LITH

Standard Veterinary Diagnostic Set with 2 x ADAPT lithium handles and twin port charger

- LED Veterinary Slit Otoscope with 3x swivelling magnification
- LED L28 veterinary ophthalmoscope with cobalt blue filter, light sensitive filter and 5 apertures
- 3 x metal tips; 1 each of 57.0 x 4.0mm, 65.0 x 6.0mm, 90.0 x 7.0mm
- 2 x ADAPT Lithium ion handles and desk charger with unique Auto On/Auto Off facility that automatically switches handle off when located in charger and switches on when removed
- Storage case

Order Code	Description	RRP
OPT-DIA-SET-STD-2H-LITH	Opticlar Veterinary Diagnostic Set (Otoscope, ophthalmoscope and Metal Tips) with 2 ADAP Lithium Handles and Twin Charger	£857.00

OPT-DIA-SET-STD-1H-LITH

Standard Veterinary Diagnostic Set with 1 x ADAPT lithium handle and single port charger

Order Code	Description	RRP
OPT-DIA-SET-STD-1H-LITH	Opticlar Veterinary Diagnostic Set (Otoscope, ophthalmoscope and Metal Tips) with 1 ADAP Lithium Handles and Single Charger	£780.00



OPT-DIA-SET-STD-CCELL

Standard Veterinary Diagnostic Set with ADAPT C cell handle

- LED Veterinary Slit Otoscope
- LED L28 veterinary ophthalmoscope with cobalt blue filter, light sensitive filter and 5 apertures.
- 3 x metal tips: 1 each of 57.0 x 4.0mm, 65.0 x 6.0mm, 90.0 x 7.0mm
- C Cell battery handle.
- Storage case

Order Code	Description	RRP
OPT-DIA-SET-STD-CCELL	Opticlar Veterinary Diagnostic Set with C Cell Battery Handle	£585.00

OPT-DIA-SET-STD-2H-ELITH

Standard Veterinary Diagnostic Set with 2 x E lithium handles and twin port charger

- LED Veterinary Slit Otoscope
- LED L28 veterinary ophthalmoscope with cobalt blue filter, light sensitive filter and 5 apertures
- 3 x metal tips: 1 each of 57.0 x 4.0mm, 65.0 x 6.0mm, 90.0 x 7.0mm
- 2 x E lithium modular handles
- Twin port desk charger
- Storage case



Order Code	Description	RRP
OPT-DIA-SET-STD-2H-ELITH	Opticlar Standard Diagnostic Set (Otoscope, ophthalmoscope and Metal Tips) with 2 E Lithium Handles and Twin Charger	£909.00



OPT-DIA-SET-STD-WALL

Standard Veterinary Diagnostic Set - Wall Mounted - Mains and C cell with Stainless Steel Tip Tidy

- LED Veterinary Slit Otoscope with Stainless Steel Tip Tidy
- LED L28 veterinary ophthalmoscope with cobalt blue filter, light sensitive filter and 5 apertures
- 3 x metal tips: 1 each of 57.0 x 4.0mm, 65.0 x 6.0mm, 90.0 x 7.0mm
- Mains and C cell powered wall unit with twin spiral cord handles

Order Code	Description	RRP
OPT-DIA-SET-STD-WALL	Opticlar Wall Mounted Mains Power Diagnostic Set (Otoscope, ophthalmoscope and Metal Tips)	£792.00

OPT-OTO-LAR-SET-MILLER

Prep Room Set 2 - with Vet Miller Straight Blade and LED Vet Slit Otoscope Ideal set for small animal based practice. Can be used for ear irrigation, foreign body removal, inspection and diagnosis as well as intubation.

Prep Room Set 2 contents:

- Miller Sz.2 veterinary blade
- Lithium Ion rechargeable LED laryngoscope handle
- LED veterinary slit otoscope
- 4 x multipurpose tips
2 x open tips for intubation and seed removal
1 x long closed tip with cutout and
1 x long closed tip
- Twin port charger



Order Code	Description	RRP
OPT-OTO-LAR-SET-MILLER	Opticlar Otoscope Laryngoscope Vet Set with Miller Straight Blade and Twin Charger	£1,010.00



OPT-OTO-LAR-SET-MAC

Prep Room Set 2A - with Vet Macintosh Curved Blade and LED Vet Slit Otoscope Ideal set for small animal based practice and can be used for ear irrigation, foreign body removal, inspection and diagnosis as well as intubation.

Prep Room Set 2 contents:

- Mac Sz2 curved veterinary blade
- Lithium Ion rechargeable LED laryngoscope handle
- LED veterinary slit otoscope
- 4 x multipurpose tips
2 x open tips for intubation and seed removal
1 x long closed tip with cutout and
1 x long closed tip
- Twin port charger

Order Code	Description	RRP
OPT-OTO-LAR-SET-MAC	Opticlar Otoscope Laryngoscope Vet Set with Macintosh Curved Blade and Twin Charger	£1,010.00



OPTICLAR VISIONMAG Pro-Line I.O Loupes

With a twin lens system the Pro-Line range of loupes provide excellent edge to edge clarity with no aberration. The individually adjustable optics ensure accurate interpupillary setting. Coated optics minimise reflections and maximise light transmission to provide crisp bright images. The unique height adjuster provides perfect pupillary alignment. The extreme angles of declination available ensures that these loupes are ideal for dentistry as well as all other forms of examination, other disciplines and surgery. Very comfortable, lightweight yet strong sports frame.

Order Code	Magnification	Working Distance mm
402.025.340	2.5x	340
402.025.420	2.5x	420
402.025.460	2.5x	460
402.025.500	2.5x	500
402.030.340	3.0x	340
402.030.420	3.0x	420
402.030.460	3.0x	460
402.030.500	3.0x	500

Order Code	Description	RRP
OPT-LOUPE-25-340	Vision Mag Pro-Line I.O Loupes 2.5x magnification 340mm Working Distance	£550.00
OPT-LOUPE-25-420	Vision Mag Pro-Line I.O Loupes 2.5x magnification 420mm Working Distance	£550.00
OPT-LOUPE-25-460	Vision Mag Pro-Line I.O Loupes 2.5x magnification 460mm Working Distance	£550.00
OPT-LOUPE-25-500	Vision Mag Pro-Line I.O Loupes 2.5x magnification 500mm Working Distance	£550.00
OPT-LOUPE-30-340	Vision Mag Pro-Line I.O Loupes 3.0x magnification 340mm Working Distance	£550.00
OPT-LOUPE-30-420	Vision Mag Pro-Line I.O Loupes 3.0x magnification 420mm Working Distance	£550.00
OPT-LOUPE-30-460	Vision Mag Pro-Line I.O Loupes 3.0x magnification 460mm Working Distance	£550.00
OPT-LOUPE-30-500	Vision Mag Pro-Line I.O Loupes 3.0x magnification 500mm Working Distance	£550.00



Opticlar VisionMax Mini LED Headlight

The VisionMax Mini LED Headlight has been designed to provide the brightest, sharpest illumination field from the lightest and most compact light source. With a head-mounted light, it is ideal when the user barely notices the light is there and appreciates the benefits of a perfectly lit examination / operating field without the distraction and discomfort of a visible, heavier light. That is certainly true with the VM Mini headlight.

Illumination is provided by the 3watt TrueTone™ LED, with even illumination throughout the field of view and edge-to-edge clarity with no visible aberration or distortion. TrueTone™ LED provides the brightest light, whilst retaining the natural characteristics of the image.

- VM Mini - micro in size and micro in weight
- Articulated mounting and adjustable light position
- Available with a choice of Lightweight sports style or Professional headband providing extra cranial support
- Powered by Lithium-Ion rechargeable battery pack, in a choice of:
 - Wireless, with headband mounted battery pack (Pro headband only)
 - Waist-worn with belt clip
- TrueTone™ LED illumination, with 10 year warranty (typical life >20,000 hours)

500.010.012

VisionMax Mini LED Headlight, Pro Wireless

500.010.010MINI

VisionMax Mini LED Headlight, Pro Headband with Waist Power Pack

500.010.020MINI

VisionMax Mini LED Headlight, Lightweight Sports Headband with Waist Power Pack

Order Code	Description	RRP
OPT-LIGHT-MINI	Vision Max Mini LED Headlight Pro Wireless	£901.00
OPT-LIGHT-MINI-WP	Vision Max Mini LED Headlight Pro with Waistband Powerpack	£681.00
OPT-LIGHT-MINI-WP-SH	Vision Max Mini LED Headlight with Waistband Powerpack and Sports Headband	£637.00

Diathermy Units

MB122



The Gima MB122 is a HF electrosurgery unit ideal for performing middle monopolar or bipolar electrosurgery. One of the most robust units on the market.

The Gima MB 160D is a HF electrosurgery unit ideal for performing middle monopolar or bipolar electrosurgery and ideal for damp operational fields such as internal and orthopaedic surgery. Digital control now increases the precision of electrical output.



This is a reusable GIMA 30320 electrosurgery artery sealer, compatible with the MB120 and MB160D units and measures 26cm in length.

Requires compatible cable 30325 and bipolar adapter 30642 to function.



These are reusable GIMA 30310 electrosurgery scissors, compatible with the MB120 and MB160D units and measures 18cm in length (7").

Requires compatible cable 30315 and bipolar adapter 30642 to function.



Order Code	Description	RRP
DIA-MB122-SET	Gima MB122 Diathermy Unit (includes cables,electrodes and fingerswitch)	£1,500.00
DIA-MB160D-SET	Gima MB160D Diathermy Unit (includes cables,electrodes and fingerswitch)	£1,850.00
DIA-ART-SEAL-HP	Artery Sealer Handpiece	£400.00
DIA-ART-SEAL-CB	Artery Sealer Cable	£100.00
DIA-BP-SCISS	Bipolar Scissors	£350.00
DIA-BP-SCISS-CB	Cable for Bipolar Scissors	£100.00

Preowned Powertools

This is a pre-owned Hall Surgairtome Two 5058-01 high speed drill.

It runs at 90,000rpm at 90-110psi and is ideal for all precision cutting and sculpting of bone and/or enamel in wet surgery. It has an angled swivel hose connector for comfort and instant stop/start of the drill function on release of the switch. Premium equipment, fully refurbished.

Order Code	Description	RRP
PT-SURG-SET	Halls Surgairtome Two including Burr, Drill, Long Burr Guard and Hose	£2,500.00

Warranty is 3 months excluding misuse.



The K200 Minidriver set is perfect for small bone procedures in veterinary theatres. It is robust, easy to use and cheap to maintain.

Order Code	Description	RRP
PT-K200-SET	K200 SET including Minidriver Handpiece, K220 Sagittal Saw, K109 Jacobs Chuck Large, K110 Jacobs Chuck Small, K111A Wire Driver, K114 AO QC, 3M Hose	£3,600.00

Multi-function Drill Saw System with TPLO

We constantly get asked for an all-in-one unit the covers everything including TPLO that doesn't cost the earth to our customers. We finally found the A100 system that fits the bill. A robust sturdy handpiece with a large range of attachments. We have collated 5 of the most common attachments together in a kit that offers fantastic value under £4000

Order Code	Description	RRP
PT-A100-SET	Full Modular Kit Including Handpiece, 1 Battery, Charger, Transfer Device, Jacobs Chuck, AO Attachment, Oscillating Saw, K Wire Attachment, TPLO Saw	£3,950.00
PT-A100-HP	Handpiece, including 2 Batteries, Charger and Transfer Device	£2,000.00
PT-A100-JC	Jacobs Chuck Attachment 0.8-8mm	£420.00
PT-A100-AO	AO Drill Attachment 0.8-8mm	£420.00
PT-A100-OS	Oscillating Saw Attachment 18000rpm	£420.00
PT-A100-KW-S	A+100 K Wire Attachment small 0.2-2.0mm	£420.00
PT-A100-KW-L	A+100 K Wire Attachment large 1.5mm - 3.2mm	£420.00
PT-A100-TPLO	TPLO Saw Attachment	£500.00
PT-A100-BAT	Spare battery	£70.00

Other attachments are available



"A good all rounder with the versatility to suit the vast majority of orthopaedic procedures at a fraction of the cost of others in the market"

Dr Chris Lancelott BSc(Hons) DVM(Hons)
CertAVP(GSAS) MRCVS

TPLO Saw

A great versatile TPLO Saw suitable for regular or occasional use.

Comes with a 12-month Warranty.

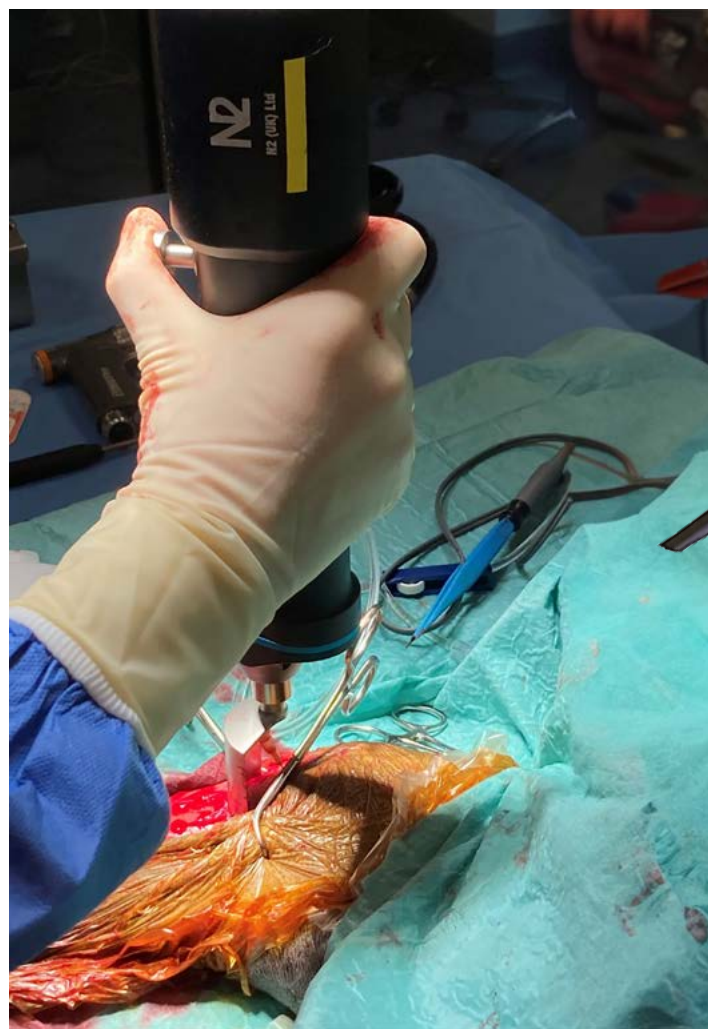
Will fit all tri-fit tplo saw blades including the Acculan ones we have listed on previous pages.

Order Code	Description	RRP
TPLO-KIT	Comprises Autoclaveable TPLO Saw, two batteries and charger	£3,400.00

Order Code	Description	RRP
TPLO-BL-9	Economy TPLO saw blade 9mm	£240.00
TPLO-BL-12	Economy TPLO saw blade 12mm	£240.00
TPLO-BL-15	Economy TPLO saw blade 15mm	£240.00
TPLO-BL-18	Economy TPLO saw blade 18mm	£240.00
TPLO-BL-21	Economy TPLO saw blade 21mm	£240.00
TPLO-BL-24	Economy TPLO saw blade 24mm	£240.00
TPLO-BL-27	Economy TPLO saw blade 27mm	£260.00
TPLO-BL-30	Economy TPLO saw blade 30mm	£260.00
TPLO-BL-33	Economy TPLO saw blade 33mm	£260.00

The above tray to hold the saw and all its components is available to purchase.

Order Code	Description	RRP
TPLO-KIT-BOX	300 x 246 x 73mm Sterilisation Box 1 battery included	£200.00



N2 Modular Autoclavable Power System

The recently launched system brings high quality orthopaedic power at an excellent price.

The kit consists of

- Cannulated Handpiece
- Wire Driver (0.7-1.8mm Wires)
- AO Quick Release Attachment
- Mini Stainless-Steel Chuck and Key
- Oscillating Saw Attachment
- One Battery and Two Transfer Devices
- Carry Case



Economy Autoclavable Drill

A basic economical Autoclaveable Drill with everything you need to do orthopaedics, and cheap enough to carry as a spare. Priced to compete with the DIY drills in the market this is a great entry level unit. Comes with 1 years warranty, comes with 1 battery and charger.

Order Code	Description	RRP
AC-DRILL-ECON	Autoclaveable Drill including 1 Battery and Charger	£650.00
AC-DRILL-ECON-BAT	Spare Battery for the Economy Drill	£70.00



There is also an optional sterilisation tray that fits all the autoclavable items.

- Battery Charge time – 2 Hours
- Battery Usage – 30 Mins Constant use
- Speed 0-2000rpm
- Autoclave up to 135 Degrees (Excluding Batteries)

Contact us to ask about a trial

Autoclaveable Modular Drill

Order Code	Description	RRP
AC-FULL-SET	Modular Autoclavable drill and saw with Chuck, Quick Release, Oscillating Saw and Wire driver attachments, one battery	£3,650.00
AC-FULL-SET-BAT	Spare Battery for Autoclaveable Modular Drill	£70.00

Autoclavable Cannulated Drill Kit

A good level cannulated drill, very sturdy and robust with stainless steel chuck. Wires of up to 3.2mm can pass through the entire unit. The Chuck will hold wires/drill bits up to 4.2mm. Comes with 1 years warranty, comes with 1 battery and charger

Order Code	Description	RRP
AC-CAN-DRILL-KIT	Cannulated Autoclavable Drill including 1 Battery and Charger	£1,000.00
AC-CAN-DRILL-BAT	Spare Battery for the Cannulated Drill	£70.00

